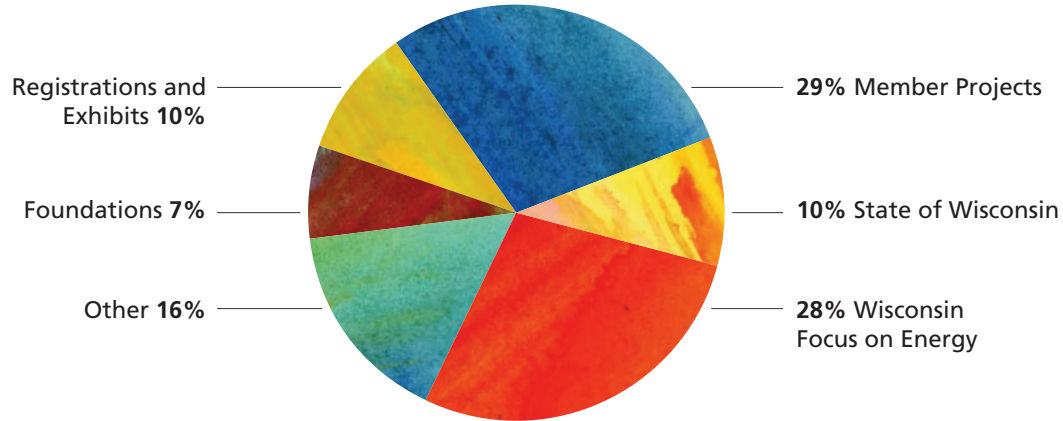


# 2009 Energy Center Financial Summary

## FUNDING DIVERSITY

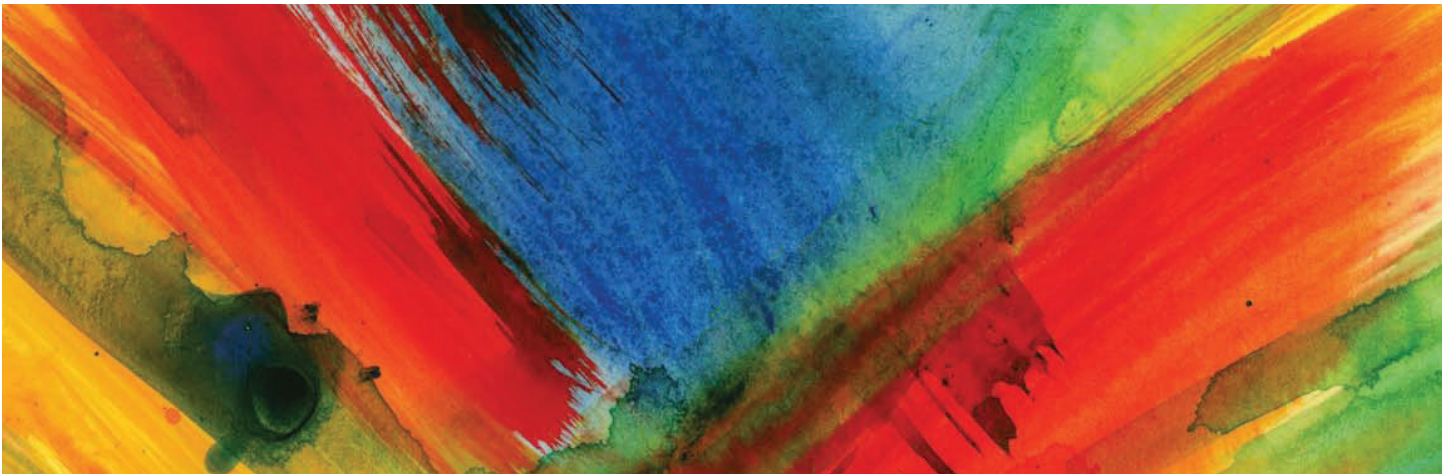


## SUMMARY BALANCE SHEET

<b>Assets</b>	<b>2008</b>	<b>2009</b>
Cash and Certificates of Deposit	\$448,963	756,963
Accounts Receivable	633,547	1,045,077
Other Current Assets	133,144	202,537
Fixed Assets	66,355	69,107
<b>Total Assets</b>	<b>1,282,009</b>	<b>2,073,684</b>
<b>Liabilities &amp; Net Assets</b>	<b>2008</b>	<b>2009</b>
Accounts Payable	338,854	542,612
Accrued Liabilities	138,662	153,907
Deferred Revenue	319,181	630,573
Other Liabilities	113,290	163,635
<b>Total Liabilities</b>	<b>909,987</b>	<b>1,490,727</b>
<b>Net Assets (Unrestricted)</b>	<b>372,022</b>	<b>582,957</b>
<b>Total Liabilities &amp; Net Assets</b>	<b>\$1,282,009</b>	<b>2,073,684</b>

## SUMMARY INCOME STATEMENT

	<b>2008</b>	<b>Percent of Revenue</b>	<b>2009</b>	<b>Percent of Revenue</b>
Revenue	\$4,451,533	100%	5,463,928	100%
Program Expenses	(3,018,671)	68%	(3,705,707)	68%
Management and General Expenses	(1,346,894)	30%	(1,547,286)	28%
<b>Change in Net Assets</b>	<b>85,968</b>	<b>2%</b>	<b>210,935</b>	<b>4%</b>
Net Assets Beginning of Year	286,054		372,022	
Net Assets End of Year	\$372,022		\$582,957	



Energy Center of Wisconsin • 455 Science Drive, Suite 200, Madison, Wisconsin 53711 • 608.238.4601

## BOARD OF DIRECTORS

### **PHYLLIS DUBÉ**

Board Chair  
We Energies

### **BILL OEMICHEN**

Board Treasurer  
Cooperative Network

### **KEITH REOPELLE**

Board Secretary  
Clean Wisconsin

### **LAURA WILLIAMS**

Board Vice Chair  
Madison Gas & Electric

### **DAVID BENFORADO**

Municipal Electric Utilities of Wisconsin

### **DAVID DONOVAN**

Xcel Energy

### **NANCY FRANK**

UW-Milwaukee, School of Architecture  
and Planning

### **CLAIRE FULENWIDER**

Northwest Energy Efficiency Alliance

### **HENRY HENDERSON**

Natural Resources Defense Council

### **GERALD KULCINSKI**

UW-Madison, College of Engineering

### **ERIC LAWSON**

Potter Lawson, Inc.

### **BARBARA NICK**

Wisconsin Public Service Corporation

### **TERRY NICOLAI**

Alliant Energy

### **ROY THILLY**

WPPI Energy

### **JOHN WILSON**

Michael, Best & Friedrich

### **JUDY ZIEWACZ**

Wisconsin Office of Energy  
Independence

### **NATHAN ZOLIK**

Public Service Commission of  
Wisconsin

## LEADERSHIP TEAM

### **SUSAN STRATTON**

Executive Director

### **MARGE ANDERSON**

Associate Director

### **CHRIS BERG THACKER**

Director of Human Resources  
and Operations

### **DOUG AHL**

Technical Director

### **STEVE KIHM**

Research Director

### **LESLIE POST**

Director of Communications

### **KATHRYN SCHIEDERMAYER**

Director of Education

**The Energy Center of Wisconsin** is a nonprofit organization dedicated to exploring ways to reduce the environmental impact of our energy use and to sharing our knowledge through research, consultation, education and outreach initiatives.